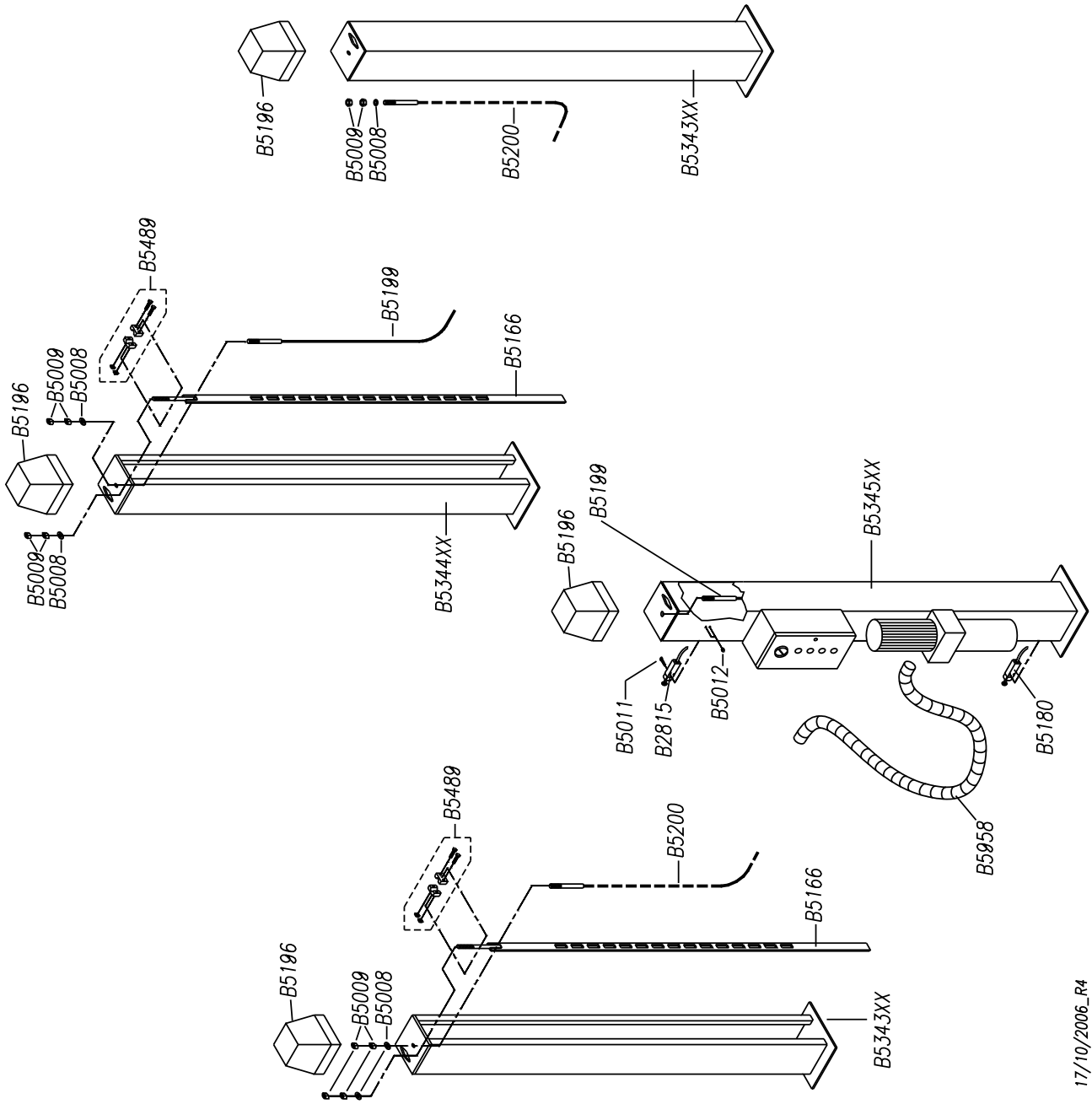
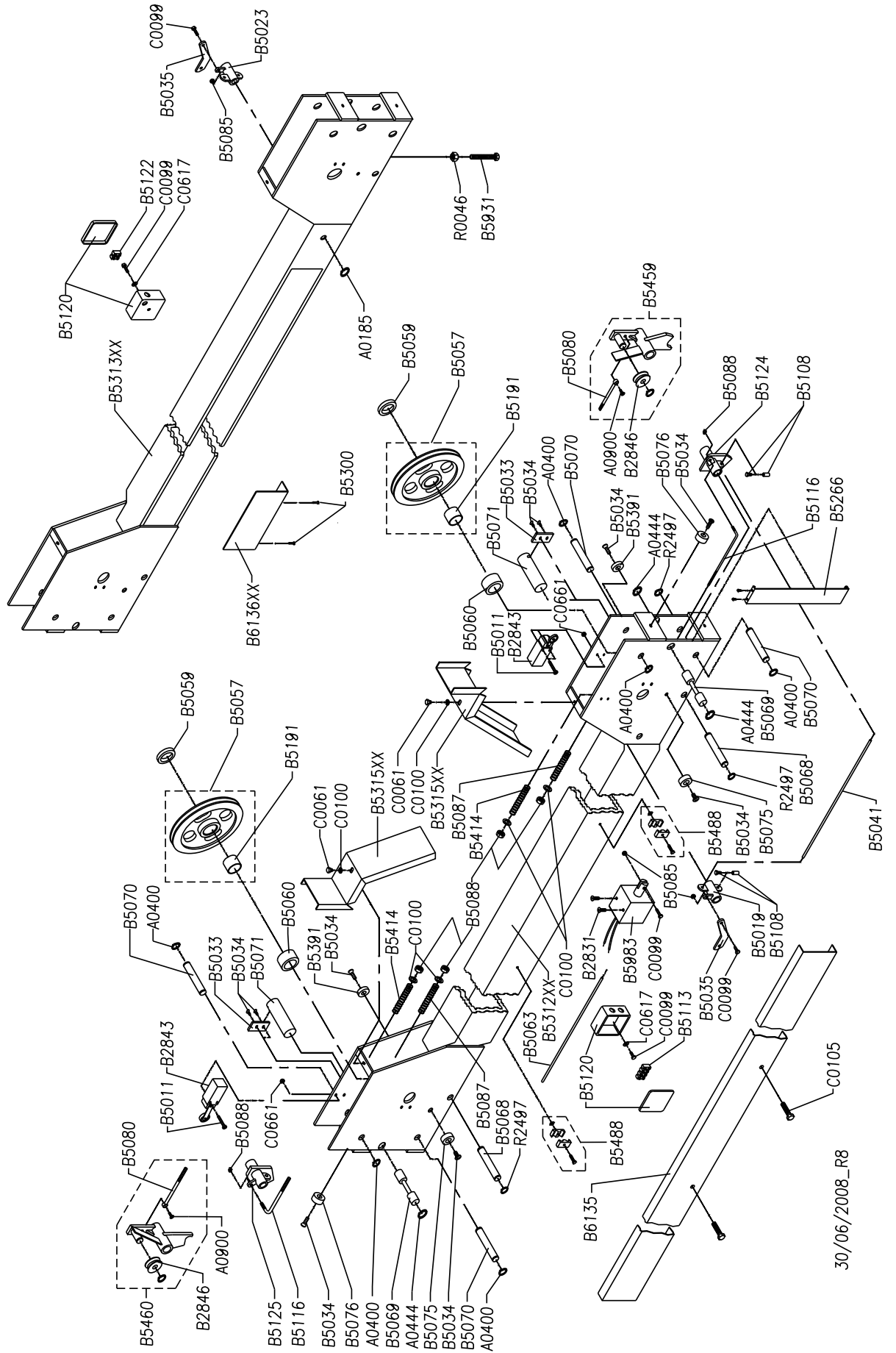


| COLONNE           |                    |
|-------------------|--------------------|
| POSTS<br>COLONNES | SÄULEN<br>COLUMNAS |

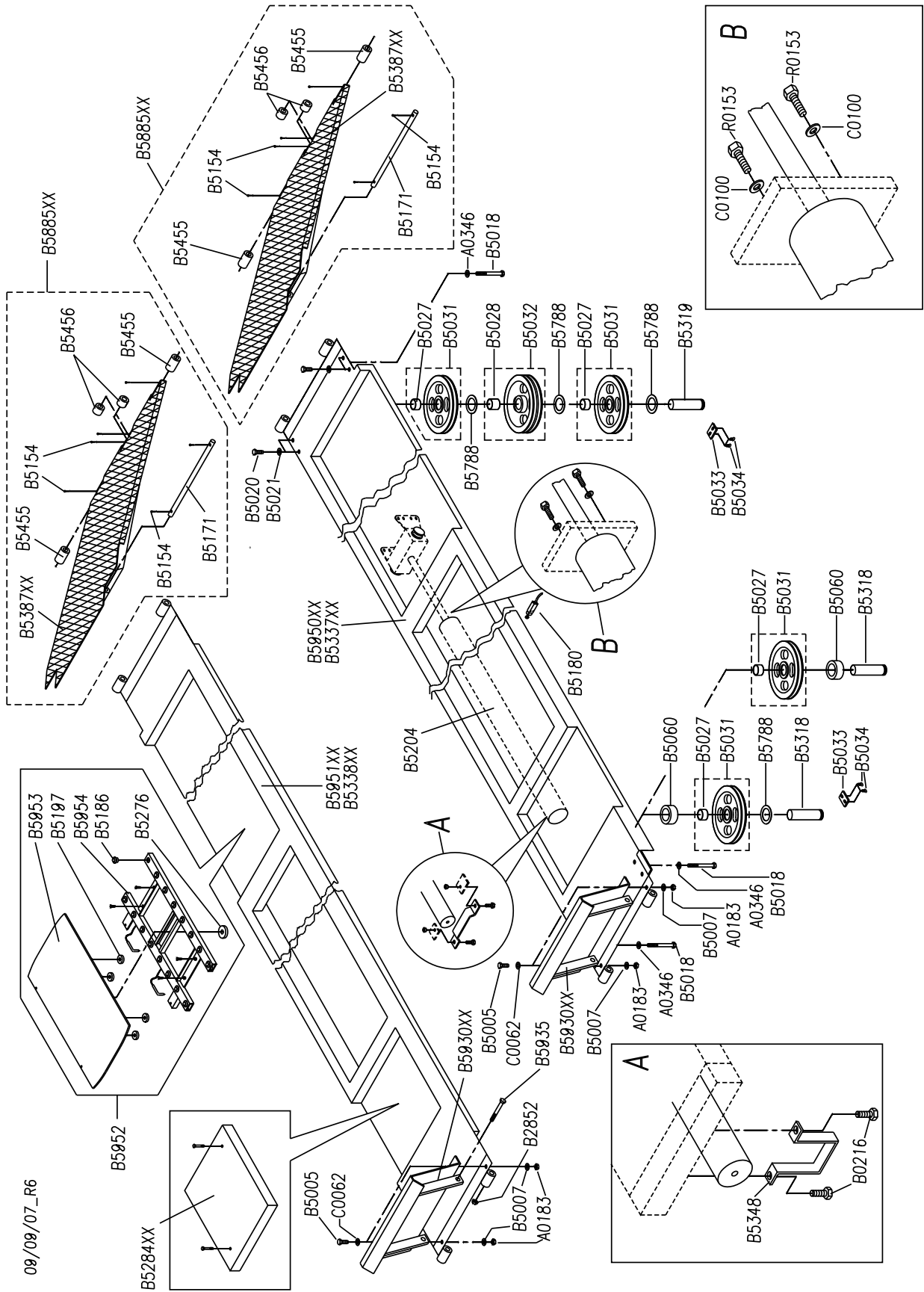
(C)2011 Werther Polska  
do użytku wewnętrznego  
nieautoryzowane użycie prawnie zabronione



| TRAVERSE                |                         |
|-------------------------|-------------------------|
| CROSSBEAMS<br>TRAVERSES | TRAVERSE<br>TRAVERSAÑOS |



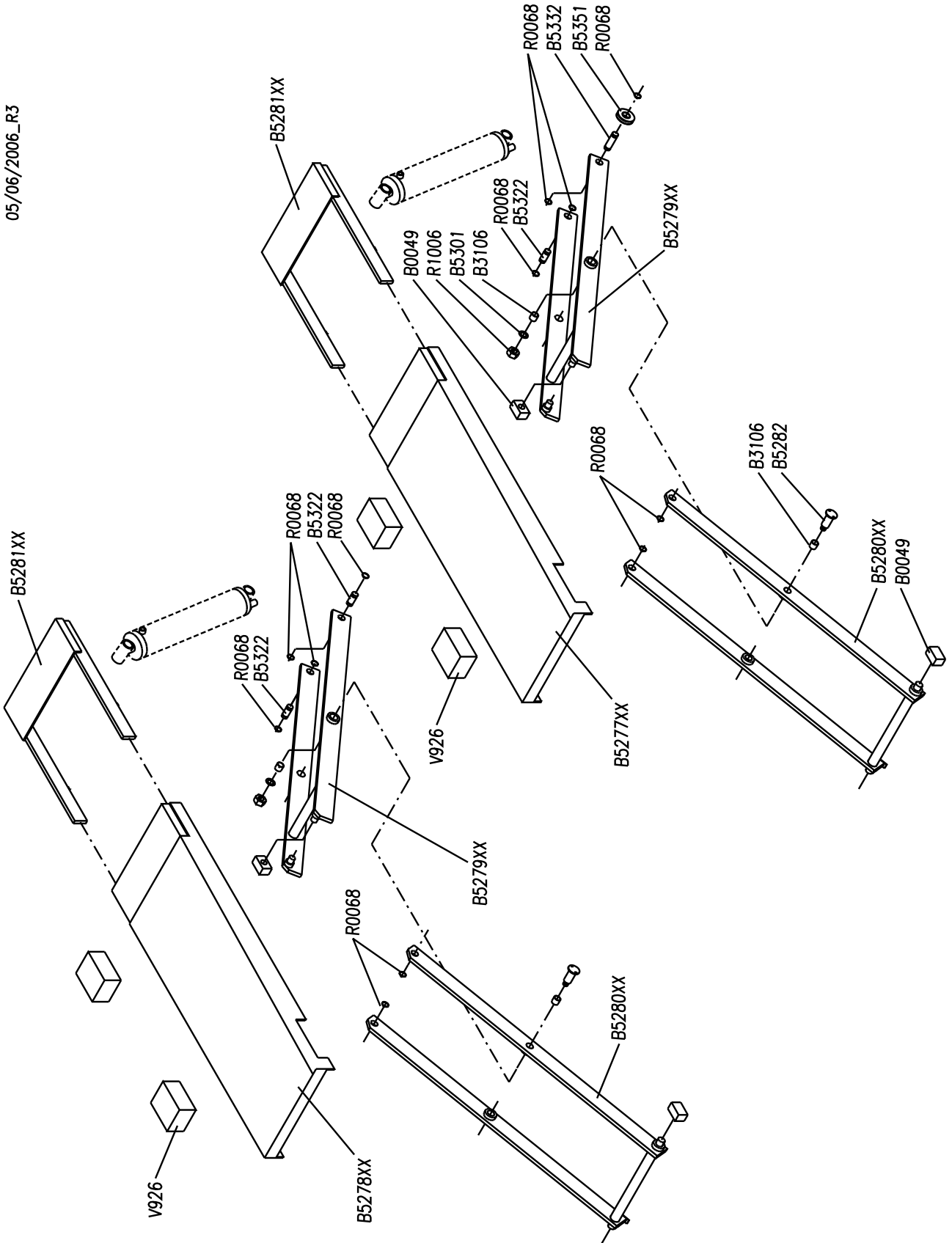
| <b>PEDANE</b>               |                    |
|-----------------------------|--------------------|
| <b>PLATFORMS</b>            | <b>FAHRSCHIENE</b> |
| <b>CHEMINS DE ROULEMENT</b> | <b>PLATAFORMAS</b> |



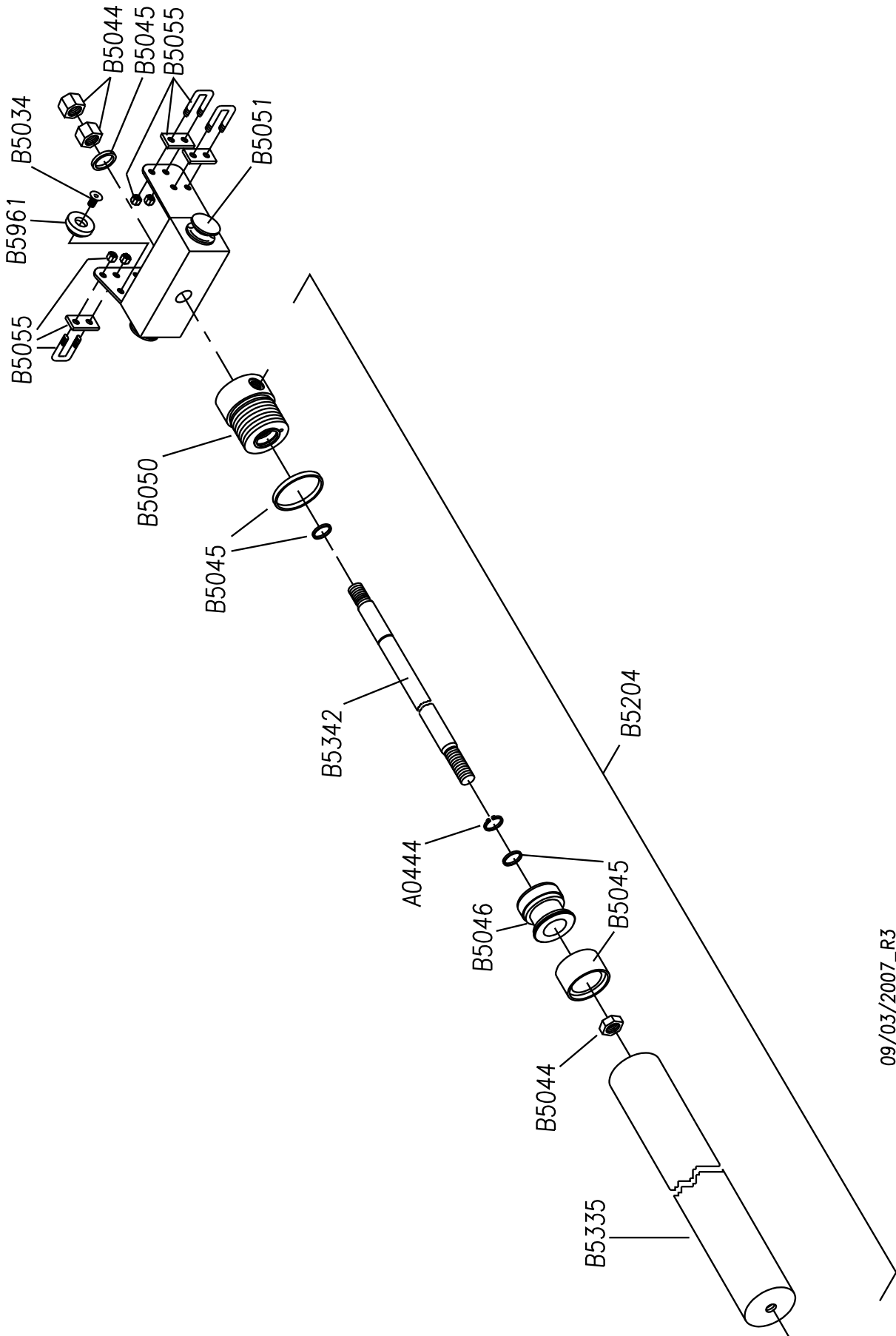
08/09/07\_R6

|                   |  |
|-------------------|--|
| <b>LIFT TABLE</b> |  |
| <b>LIFT TABLE</b> |  |

05/06/2006\_R3



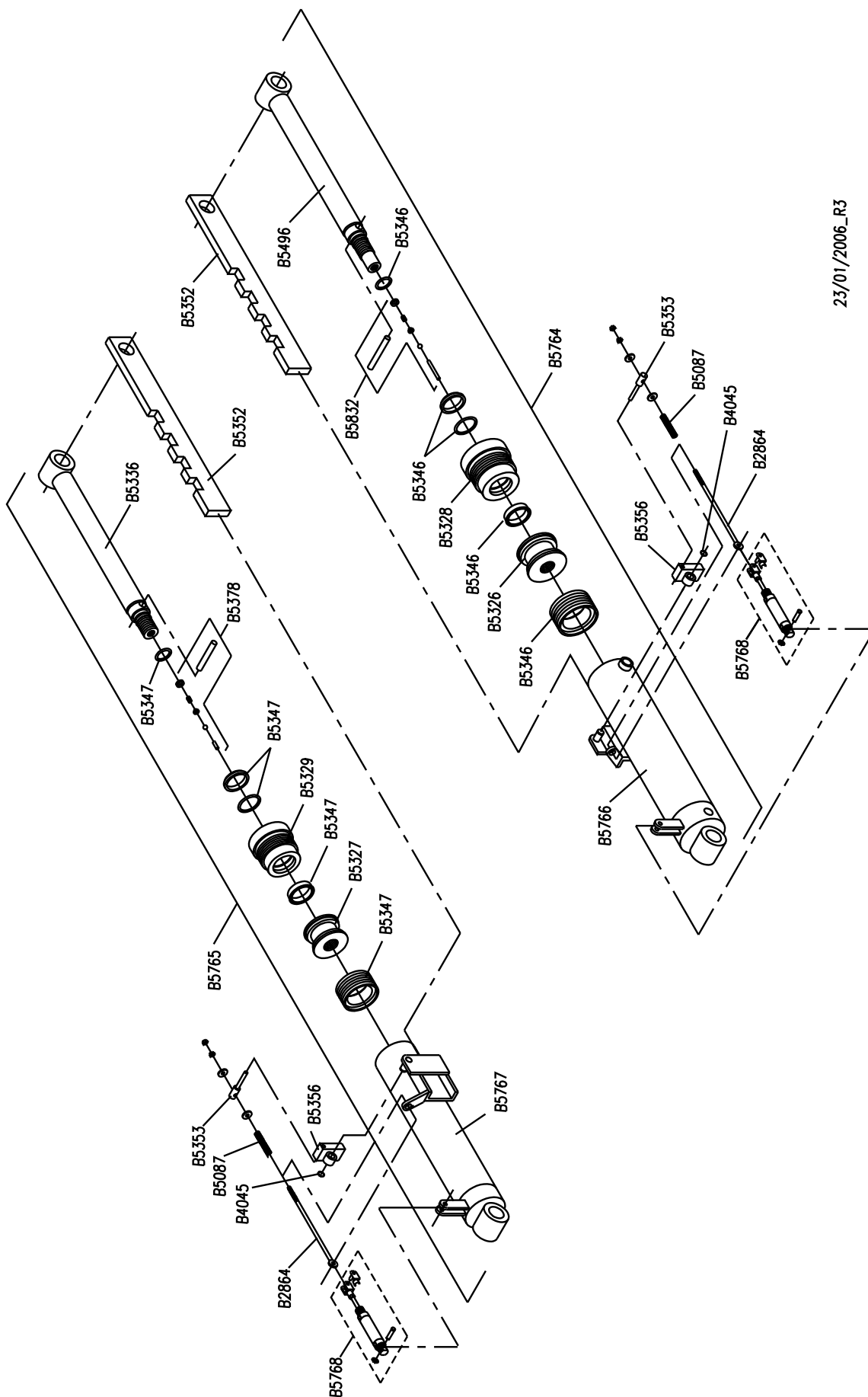
|                 |                 |
|-----------------|-----------------|
| <b>CILINDRO</b> |                 |
| <b>CYLINDER</b> | <b>ZYLINDER</b> |
| <b>VÉRIN</b>    | <b>CILINDRO</b> |



09/03/2007\_R3

# CILINDRI LIFT TABLE

## LIFT TABLE CYLINDERS

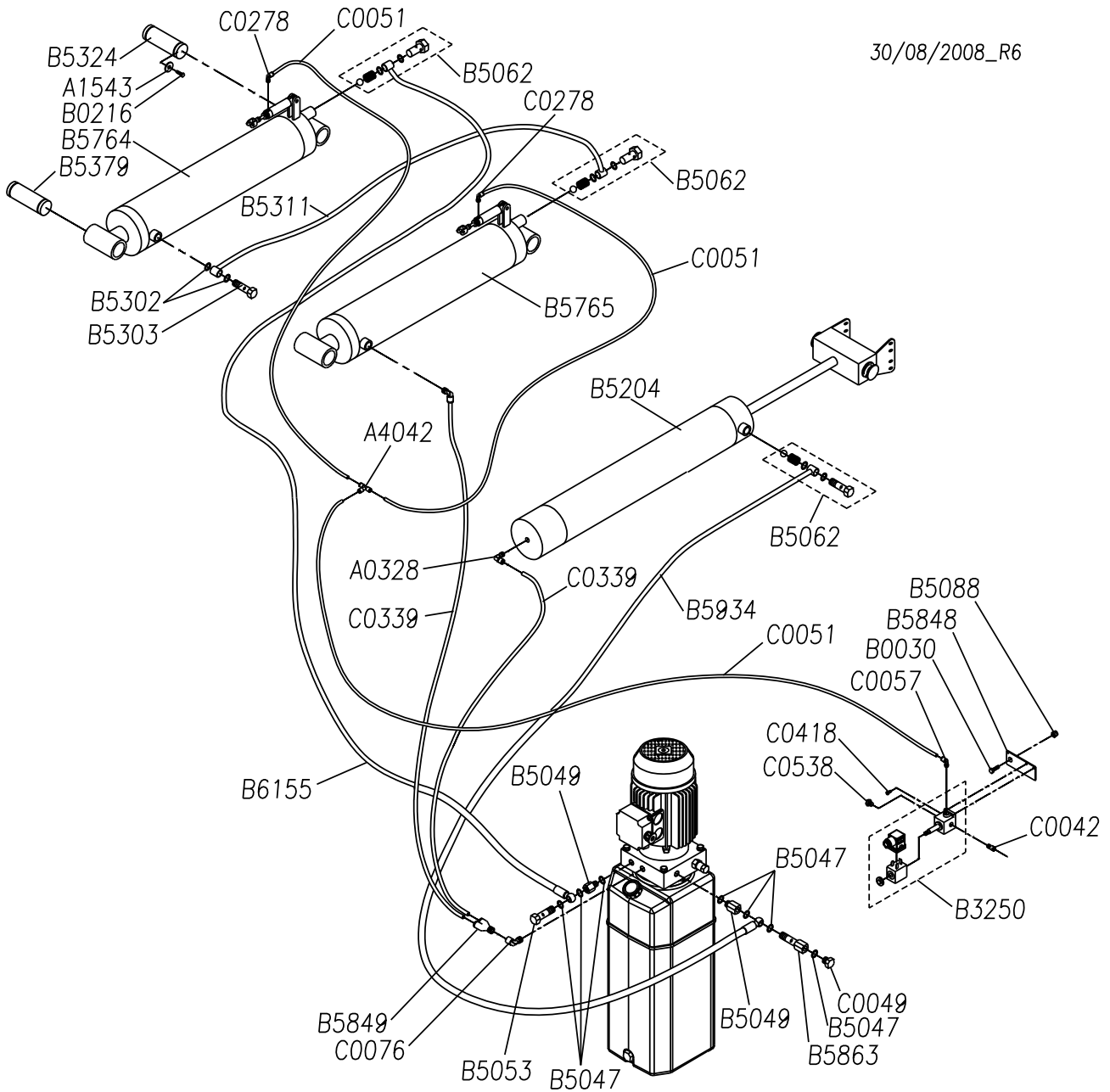


23/01/2006\_R3

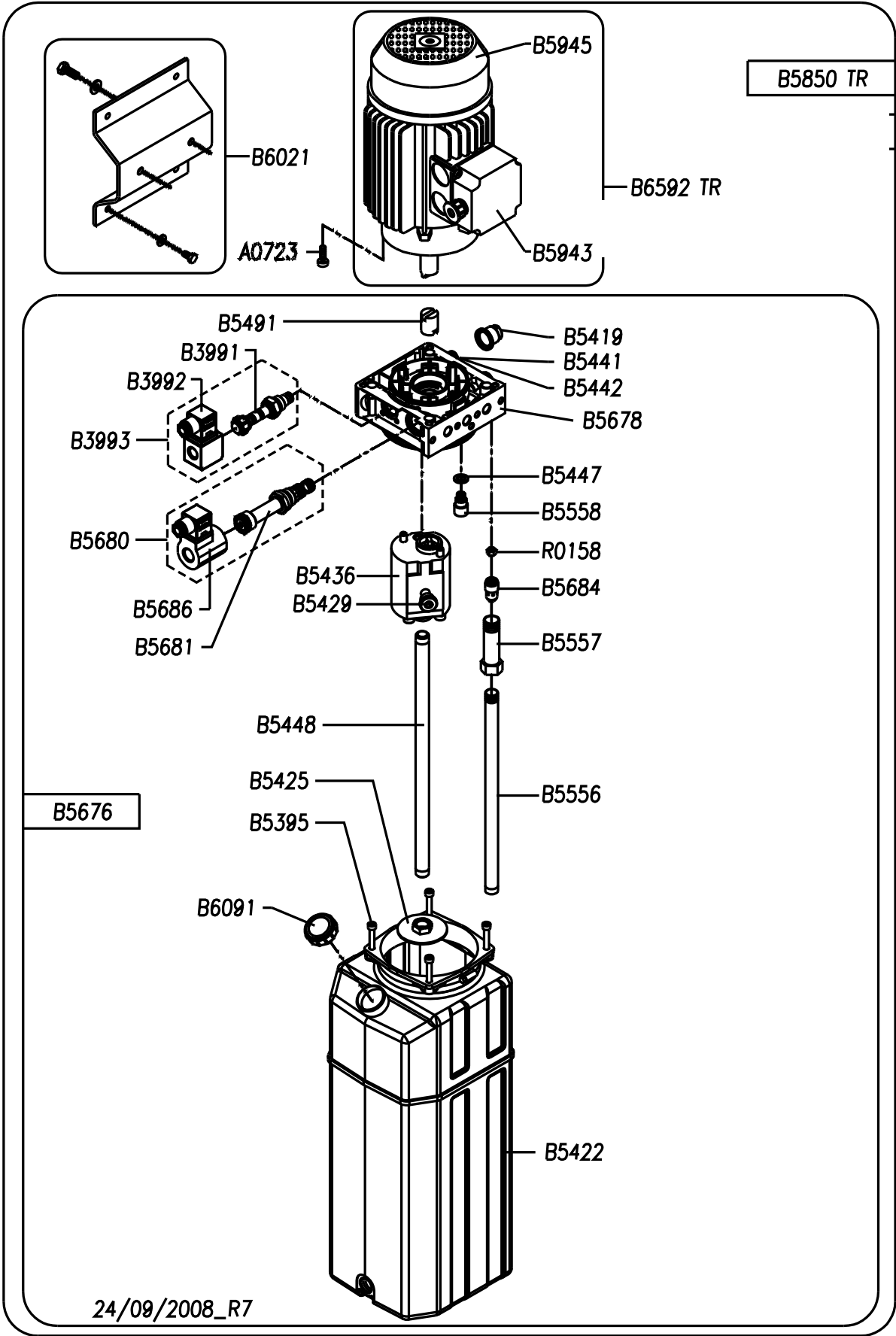
SISTEMA IDRAULICO

HYDRAULIC SYSTEM

30/08/2008\_R6



| CENTRALINA OLEODINAMICA K3  |                                 |
|-----------------------------|---------------------------------|
| OLEODYNAMIC CONTROL UNIT K3 | OELDYNAMISCHES SCHALTGEHÄUSE K3 |
| CENTRALE HYDRAULIQUE K3     | CENTRALITA OLEODINÁMICA K3      |





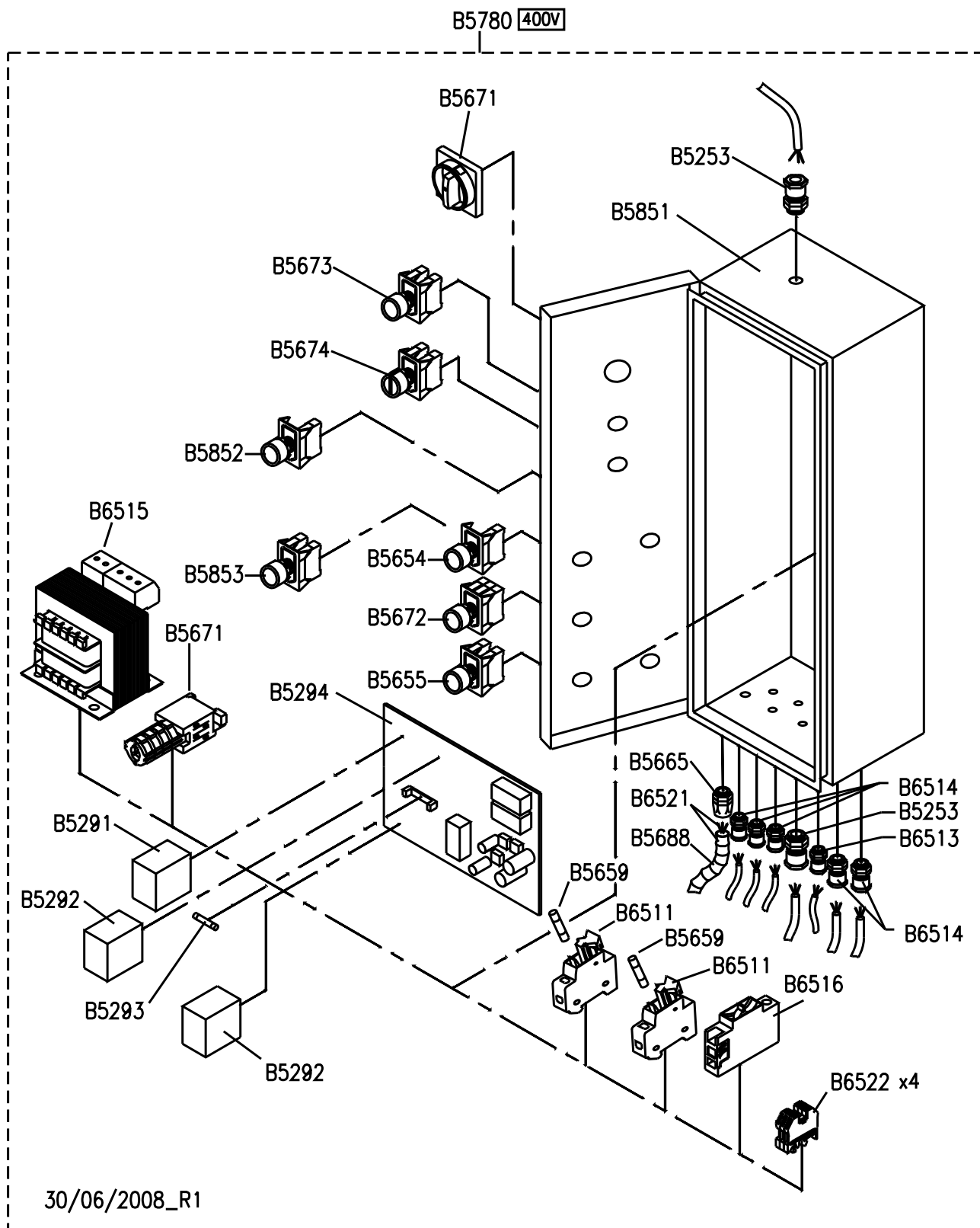
QUADRO ELETTRICO TRIFASE

CONTROL PANEL

SCHALTTAFEL DREHSTROM

COFFRET ÉLECTRIQUE

CUADRO ELECTRICO



30/06/2008\_R1

| Part Code | Sugg | Descrizione   | Description                               | Beschreibung                          | Description                        | Denominacion                         |
|-----------|------|---|---|---------------------------------------|------------------------------------|--------------------------------------|
| A0183     |      | DADO M10 UNI 5588                                   | NUT M10 UNI 5588                          | MUTTER M10 UNI 5588                   | ÉCROU M10 UNI 5588                 | TUERCA M10 UNI 5588                  |
| A0185     |      | SEEGER E18 UNI 7435                                 | SNAP RING E18 UNI 7435                    | SEEGER E18 UNI 7435                   | ANNEAU DE FIXAGE E18 UNI 7435      | SEEGER E18 UNI 7435                  |
| A0328     |      | RACCORDO "L" 1/4" M X TUBO Ø 8                      | L-SHAPED COUPLING 1/4" M FOR PIPE Ø 8     | "L" ANSCHLUSSKEGELG1/4"-Ø8            | RACCORD "L" G 1/4" - Ø8            | RACOR "L" 1/4" M PARA TUBO Ø 8       |
| A0346     |      | RONDELLA P 12 X 24 UNI 6592                         | WASHER 12 X 24                            | UNTERLEGSCHLEIBE 12 X 24              | RONDELLE Ø13X24                    | ARANDELA 13X24                       |
| A0400     |      | SEEGER E20 UNI 7435                                 | SNAP RING E20 UNI 7435                    | SEEGER-RING E20 UNI 7435              | CIRCLIPS E 20 UNI 7435             | SEEGER E20 UNI 7435                  |
| A0444     |      | SEEGER E25 UNI 7435                                 | SEEGER E25 UNI 7435                       | SEEGER E25 UNI 7435                   | ANNEAU ÉLASTIQUE ØE 25             | ARO ELÁSTICO ØE 25                   |
| A0723     |      | VITE TCEI M8X20 UNI 5931                            | SCREW TCEI M8X20 UNI 5931                 | SCHRAUBE TCEI M8X20 UNI 5931          | VIS TCHC M8X20 UNI 5931            | TORNILLO TCEI M8X20 UNI 5931         |
| A0900     |      | VITE TSPEI M6 X 18 UNI 5933                         | SCREW M6 X 18 UNI 5933                    | SCHRAUBE TSPEI M6 X 18 UNI 5933       | VIS TFHC M6 X 18 UNI 5933          | TORNILLO TSPEI M6X18 UNI 5933        |
| A1543     |      | RONDELLA P 8 (9X24X2) UNI 6593 ZB                   | WASHER 8 (9X24X2)                         | SCHEIBE 8 (9X24X2) UNI 6593           | RONDELLE8 (9X24X2)                 | ARANDELA                             |
| A4042     |      | RACCORDO RAPIDO "T" Ø6 S6540                        | QUICK "T" CONNECTION Ø6 S6540             | FITTING "T" D6                        | RACCORD EN T D6                    | CONEXION "T" D 6                     |
| B0030     |      | VITE TE M8X16 UNI 5739                              | SCREW TE M8X16 UNI 5739                   | SECHSKANTSCHRAUBE M8X16 UNI 5739      | VIS TH M8X16 UNI 5739              | TORNILLO TE M8X16                    |
| B0049     | *    | PATTINO DI SCORRIMENTO                              | SLIDE PAD                                 | GLEITBACKE                            | PATIN                              | PATÍN                                |
| B0216     |      | VITE TE M8X12 UNI 5739 ZB                           | SCREW TE M8X12 UNI 5739                   | SCHRAUBE M8X12 UNI 5739               | VIS TH M8X12 UNI 5739              | TORNILLO TE M8X12 UNI5739            |
| B2815     | *    | FINECORSAL SALITA TIPO PIZZATO FR654                | ASCENT LIMIT SWITCH TYPE PIZZATO FR654    | AUFSTIEGENDSCHALTER TYP PIZZATO FR654 | FIN DE COURSE HAUT PIZZATO FR 654  | MICROINTERRUPTOR FR 654              |
| B2831     |      | VITE TSCE 90° M6X14 UNI 5933                        | SCREW M6X14 UNI 5933                      | SCHRAUBE M6X14 UNI 5933               | VIS M6X14 UNI 5933                 | TORNILLO M6X14 UNI 5933              |
| B2843     | *    | FINECORSAL SICUREZZA TIPO PIZZATO FR1454            | SAFETY SWITCH TYPE PIZZATO FR1454         | MIKROSCHALTER TYP PIZZATO FR 1454     | FIN DE COURSE HAUT PIZZATO FR 1454 | MICROINTERRUPTOR FR1454              |
| B2846     |      | PULEGGIA  | PULLEY                                    | RIEMENSCHLEIBE Ø50 FÜR KABELSENSOR    | POULIE Ø50 CAPTEUR CABLE           | POLEA Ø 50 SENSOR CABLE              |
| B2852     |      | DADOBLK BASSO M12 6S. UNI 7474                      | SELF-LOCKING NUT M12                      | SELBSTSICHERNDE MUTTER M12            | ÉCROU FREIN M 12 UNI 7474          | TUERCA AUTOBLOCANTE M12 6S. UNI 7474 |
| B2864     |      | TIRANTE AZIONAMENTO ELETTROMAGNETE                  | MAGNET OPERATING CABLE                    | ZUGSTANGE BETÄTIGUNG ELEKTROMAGNET    | TIRANT D'ÉLECTRO-AIMANT            | TIRANTE                              |
| B3106     |      | BOCCOLA AUTOLUBR.30X34X30                           | SELF-LUBRICATING BUSHING Ø30X34X30        | SELBSTSCHMIERENDE BUCHSE D 30X34X30   | DOUILLE AUTOLUBRIFIANTE Ø30X34X30  | CASQUILLO AUTOLUBRIC. DIAM. 30X34X30 |
| B3250     |      | MICROVALVOLA PNEUMATICA                             | PNEUMATIC MICROVALVE                      | DRUCKLUFTMIKROVENTIL                  | MICRO VANNE PNEUMATIQUE            | MICRO-VÁLVULA NEUMÁTICA              |
| B3991     | *    | VALVOLA VE1-NC-EM                                   | VALVE                                     | VENTIL                                | SOUPAPE                            | VÁLVULA                              |
| B3992     | *    | BOBINA S2-CE 24VRAC 50/60HZ +CONNETTORE RADDRIZZATO | COIL                                      | SPULE                                 | BOBINE                             | BOBINA                               |
| B3993     | *    | EL.VALV.COMPL.VE1-NC-EM 24VRAC CENTR. K3            | COMPLETE ELECTRO-VALVE HYDRAULIC POWER K3 | ELEKTROVENTIL                         | ELECTROVANNE COMPLÈTE              | ELECTROVÁLVULA                       |
| B4045     |      | ANELLO SEEGER E12 UNI 7435                          | SEEGER E12 UNI 7435                       | SEEGER-RING E12 UNI 7435              | ANNEAU DE FIXAGE E12 UNI 7435      | SEEGER E12 UNI 7435                  |
| B5005     |      | VITE TE M10X25 UNI 5739                             | SCREW TE M10 X 25                         | SCHRAUBE TE M10 X 25                  | VIS TH M10 X 25                    | TORNILLO TE M10X25                   |
| B5007     |      | RONDELLA P 10 X 30 UNI 6593                         | WASHER 10 X 30 UNI 6593                   | UNTERLEGSCHLEIBE 10 X 30 UNI 6593     | RONDELLE PLATE 10 X 30 UNI 6593    | ARANDELA 10X30 UNI 6593              |
| B5008     |      | RONDELLA P 21X37X3 UNI 6592                         | WASHER Ø21X37X3 UNI 6592                  | UNTERLEGSCHLEIBE Ø21X37X3 UNI 6592    | RONDELLE PLATE 21X37 UNI 6592      | ARANDELA 21X37 UNI 6592              |
| B5009     |      | DADO M20 UNI 5588                                   | NUT M20 UNI 5588                          | MUTTER M20 UNI 5588                   | ECROU M20 UNI 5588                 | TUERCA M20 UNI 5588                  |
| B5011     |      | VITE TCCE M5X35 UNI 5931                            | SCREW M5X35 UNI 5931                      | SCHRAUBE TCCE M5X35 UNI 5931          | VIS TCCE M5X35 UNI 5931            | TORNILLO TCCE M5X35 UNI 5931         |
| B5012     |      | DADO CIECO M5 UNI 5721                              | BLANK NUT M5 UNI 5721                     | MUTTER M5 UNI 5721                    | ECROU BORGNE M5 UNI 5721           | TUERCA CIEGA M5 UNI 5721             |
| B5018     |      | VITE TE M12 X 100 UNI 5737                          | H.H. SCREW M12 X 100 UNI 5737             | SCHRAUBE TE M12 X 100 UNI 5737        | VIS TE M12 X 100 UNI 5737          | TORNILLO TE M12X100 UNI 5737         |
| B5019     |      | PERNO AZIONAMENTO T.L.C. W435                       | COMMAND SIDE CROSS PIN                    | STIFT T.L.C.                          | GOUJON D'ACTIONNEMENT T.L.C        | PERNO ACCIONAMIENTO T.L.C.           |
| B5020     |      | VITE TE M12X25 UNI 5739                             | SCREW TE M12X25 UNI 5739                  | SCHRAUBE TE M12 X 25 UNI 5739         | VIS TE M12X25 UNI 5739             | TORNILLO TE M12X25 UNI 5739          |
| B5021     |      | RONDELLA DE Ø12 DIN 6798 A                          | WASHER OD Ø12 DIN 6798 A                  | UNTERLEGSCHLEIBE D 12 UNI 6798A       | RONDELLE DE Ø12 DIN 6798 A         | ARANDELA DE Ø12 DIN 6798 A           |
| B5023     |      | PERNO AZIONAMENTO T.L.O. W435                       | OPPOSITE SIDE CROSS PIN                   | STIFT T.L.O.                          | GOUJON D'ACTIONNEMENT T.L.O.       | PERNO ACCIONAMIENTO                  |

|       |   |   |  |  |   |   |
|-------|---|---|--|--|---|---|
| B5027 | * | BRONZINA Ø 40 X 44 X 20 MBI - CB85 - 4020         | BUSHING Ø 40 X 44 X 20 MBI - CB85 - 4020       | LAGERBUCHSE Ø 40 X 44 X 20 MBI - CB85 - 4020 | COUSSINET Ø 40X44X20 MBI - CB85 - 4020                      | COJINETE Ø 40X44X20 MBI-CB85-4020       |
| B5028 | * | BRONZINA Ø 40 X 44 X 30 MBI - CB85 - 4030         | BUSHING Ø 40 X 44 X 30 MBI - CB85 - 4030       | LAGERBUCHSE Ø 40 X 44 X 30 MBI - CB85 - 4030 | COUSSINET Ø 40X44X30 MBI - CB85 - 4030                      | COJINETE Ø 40X44X30 MBI-CB85-4030       |
| B5031 | * | PULEGGIA 1 GOLA Ø 230 X 25                        | 1-RACE PULLEY Ø 230 X 25                       | SEILROLLE Ø 230 X 25                         | POULIE 2 GORGE Ø 230X31                                     | POLEA 1 CANALES Ø 230X25                |
| B5032 | * | PULEGGIA 2 GOLA Ø 230 X 31                        | 2-RACE PULLEY Ø 230 X 31                       | SEILROLLE Ø 230 X 31                         | POULIE 1 GORGE Ø 230X 31                                    | POLEA 2 CANALES Ø 230X31                |
| B5033 |   | LAMA FERMAPERNO                                   | PIN STOPPING PLATE                             | ZAPFENSPEERBLATT                             | ARRÊTOIR  | CHAPA CIERRA-PERNO                      |
| B5034 |   | VITE TSPEI M8X12 UNI 5933                         | SCREW TSPEI M8X12 UNI 5933                     | SCHRAUBE TSPEI M8X12 UNI 5933                | VIS TPSCE M 8 X 12 UNI 5933                                 | TORNILLO TPSCE M8X12 UNI 5933           |
| B5035 |   | TIRANTE MAGNETE 430                               | MAGNET TIE ROD                                 | ZUSTANGE MAGNETE                             | TIRANT POUR MAGNET  | TIRANTE ELECTROIMÁN                     |
| B5041 |   | TIRANTE PERNO AZIONAMENTO DX                      | RIGHT PIN BOLT                                 | SPANNSTANGE DES ANTRIEBSZAPFENS RECHTS       | TIRANT POUR GOUJON D'ACTIONNEMENT DX                        | TIRANTE PERNO ACCIONAMIENTO             |
| B5044 |   | DADO M M22 X 1,5 UNI 5588                         | NUT M22 X 1.5 UNI 5588                         | MUTTER M22 X 1,5 UNI 5588                    | ÉCROU M22 X 1,5 UNI 5588                                    | TUERCA M22X1, 5 UNI 5588                |
| B5045 | * | KIT GUARNIZIONI CILINDRO                          | CYLINDER GASKET KIT                            | SET ZYLINDERDICHTUNGEN                       | KIT JOINTS DE VÉRIN   | JUEGO DE JUNTAS CILINDRO                |
| B5046 |   | STANTUFFO   | PISTON   | KOLBEN                                       | PISTON  | ÉMBOLO                                  |
| B5047 | * | RONDELLA DI TENUTA CON GUARNIZIONE 1/4"           | GASKET WITH 1/4" SEAL                          | DICHTUNGSUNTERLEGSCHIEBE MIT DICHTUNG 1/4"   | RONDELLE D'ÉTANCHÉITÉ 1/4"                                  | ARANDELA DE CIERRE CON GUARNICIÓN 1/4"  |
| B5049 |   | PROLUNGA M-F 1/4"                                 | EXTENSION                                      | DISTANZSTÜCK                                 | RALLONGE  | DISTANCIADOR                            |
| B5050 |   | TESTATA   | CYLINDER HEAD                                  | ZYLINDERKOPF                                 | TÊTE DE VÉRIN   | CABEZAL                                 |
| B5051 |   | GIOGO   | BEAM   | ZYLINDERZUGSEIL                              | PALONNIER   | YUGO DE APOYO                           |
| B5053 | * | VITE FORATA 1/4                                   | SCREW 1/4                                      | SCHRAUBE 1/4"                                | BOUCHON RENIFLARD 1/4"                                      | TORNILLO CON ORIFICIO 1/4"              |
| B5055 |   | MORSETTO  | CLAMP  | KLEME  | BORNIER   | MORDAZA                                 |
| B5057 | * | PULEGGIA 1 GOLA Ø230 X 40 + BRONZINA MBI C85-4040 | 1-RACE PULLEY Ø230 X 40 + BUSHING MBI C85-4040 | RIEMENSCHIEBE 230X40 1 KEHLE                 | POULIE 1 GORGE 230X40+COUSSINET                             | POLEA 1 CANAL 230X40+COJINETE           |
| B5059 | * | DISTANZIALE Ø40 X 9                               | SPACER Ø40 X 9                                 | DISTANZSTUECK Ø40X9                          | ENTRETOISE Ø40X9  | DISTANCIADOR Ø40X9                      |
| B5060 | * | DISTANZIALE Ø40X27                                | SPACER Ø40X27                                  | DISTANZSTUECK Ø40X27                         | ENTRETOISE Ø40X27   | DISTANCIADOR Ø40X27                     |
| B5062 | * | KIT VALVOLA BLOCCA CILINDRO                       | CYLINDER SAFETY VALVE ASSEMBLY                 | ZYLINDERSPEERVENTIL                          | ENSEMBLE CLAPET PARACHUTE                                   | KIT VÁLVULA DE BLOQUEO                  |
| B5063 |   | TIRANTE PERNO AZIONAMENTO SX                      | LEFT PIN BOLT                                  | SPANNSTANGE DES ANTRIEBSZAPFENS LINKS        | TIRANT POUR GOUJON D'ACTIONNEMENT SX                        | TIRANTE PERNO ACCIONAMIENTO             |
| B5068 |   | PERNO ANTISCARRUCOLAMENTO Ø16 X 101               | SAFETY PIN Ø16 X 101                           | STIFT Ø16 X 101                              | AXE DE MAINTIEN DE CÂBLE Ø 16X101                           | PERNO ANTI-DESCARRILAMIENTO Ø16X101     |
| B5069 |   | PERNO GUIDA ASTE DI SICUREZZA                     | SAFETY ROD PIN                                 | STIFT  | AXE GUIDE-CRÉMAILLÈRE                                       | PERNO GUÍA BARRA DE SEGURIDAD           |
| B5070 |   | PERNO Ø20 X 101                                   | PIN Ø20 X 101                                  | STIFT Ø20 X 101                              | AXE Ø20X101   | PERNO Ø20X101                           |
| B5071 |   | PERNO PULEGGIE TRAVERSE Ø40 X 104                 | CROSSPIECE PULLEY PIN Ø40 X 104                | STIFT Ø40 X 104                              | AXE DE POULIE DE TRAVERSE Ø 40X104                          | PERNO POLEA TRAVESAÑO Ø40X104           |
| B5075 | * | PATTINO LATERALE Ø35X10                           | SIDE SLIDING PAD Ø35X10                        | SEITLICHER GLEITSCHUH Ø35X10                 | PATIN LATÉRAL Ø35X10  | PATÍN LATERAL Ø35X10                    |
| B5076 |   | PATTINO POSTERIORE Ø35 X 17                       | REAR SLIDING PAD Ø35 X 17                      | GLEITSTUECK HINTEN Ø35 X 17                  | PATIN ARRIÈRE Ø35X17  | PATÍN POSTERIOR Ø35X17                  |
| B5080 |   | TIRANTE TASTAFUNE                                 | ROPE -FEELER TIE ROD                           | ZUGSTANGE SEILTASTER                         | TIRANT DE PALPEUR DE CÂBLE                                  | TIRANTE                                 |
| B5085 |   | DADOBK BASSO M 6 6S. UNI 7474                     | SELF-LOCKING NUT M6                            | SELBSTSICHERNDE MUTTER M6                    | ECROU FREIN M6 UNI 7474                                     | TUERCA AUTOBLOCANTE M6 UNI 7474         |
| B5087 |   | MOLLA INFERIORE RICHIAMO MARTELLETTI              | WEDGE RETURN BOTTOM SPRING                     | FEDER KEILRUECKHOLUNG                        | RESSORT DE RAPPEL DE TAQUET                                 | MUELLE RETORNO                          |
| B5088 |   | DADO BLOK M8 UNI 7474                             | NUT M8 UNI 7474                                | MUTTER BLOCK. M8 UNI 7474                    | ECROU FREIN M8 UNI 7474                                     | TUERCA AUTOBLOCANTE M8 UNI 7474         |
| B5108 |   | MORSETTO PER CAVO Ø2,5 MM.                        | CABLE CLAMP Ø2.5 MM                            | KABELKLEMME Ø2,5 MM.                         | SERRE-CÂBLE Ø2,5 MM   | MORDAZA PARA CABLE Ø2,5 MM.             |
| B5113 |   | MORSETTIERA MAMMUTH 4 POLI T.L.C.                 | CONTROL SIDE CROSSPIECE 4-POLE TERMINAL BOARD  | KLEMMLEISTE MAMMUTH 4 POLE KOMMANDOSEITE     | BOÎTE À BORNES MAMMUTH 4 PÔLES POUR TRAVERSE CÔTÉ COMMANDES | JUEGO TERMINALES MAMMUTH 4 POLOS T.L.C. |
| B5116 |   | TIRANTE PIEGATO                                   | BENT TIE ROD                                   | ZUGSTANGE                                    | TIRANT COUDÉ  | TIRANTE ACODADO                         |
| B5120 |   | SCATOLA DI DERIVAZIONE T.L.O.                     | OPERATOR SIDE CROSSPIECE CONNECTOR BLOCK       | UMLEITERDOSE                                 | COMMANDEZ LE BORNIER LATÉRAL DE CROSSPIECE                  | CAJA DE DERIVACIÓN T.L.O.               |
| B5122 |   | MORSETTIERA MAMMUTH 2 POLI T.L.C.                 | CONTROL SIDE CROSSPIECE 2-POLE TERMINAL BOARD  | KLEMMLEISTE MAMMUTH 2 POLE                   | BORNIER MAMMUTH 2 PÔLES POUR TRAVERSE ARRIÈRE               | JUEGO TERMINALES MAMMUTH 2 POLOS T.L.C. |

|         |   |   |  |  |  |   |
|---------|---|---|--|--|--|---|
| B5124   |   | MARTELLETTO DI SERVIZIO DX                | RIGHT AUXILIARY WEDGE                    | HAMMER RECHTS                                | MARTEAUX DE SERVICE-DROITE                 | CUÑA DE SERVICIO DCHA.                    |
| B5125   |   | MARTELLETTO DI SERVIZIO SX                | LEFT AUXILIARY WEDGE                     | HAMMER LINKS                                 | MARTEAUX DE SERVICE-GAUCHE                 | CUÑA DE SERVICIO IZDA.                    |
| B5154   |   | COPIGLIA 3X40 UNI 1336                    | ZINC-PLATED COTTER PIN Ø3X40             | VERZINKT SPLINTE Ø3X40                       | GOUPILLE Ø3X40 GALVANISÉE                  | PASADOR Ø3X40 ZINCADO                     |
| B5166   |   | ASTA DI SICUREZZA                         | SAFETY ROD                               | KLINKENATANGE                                | CRÉMAILLÈRE DE SÉCURITÉ                    | BARRA DE SEGURIDAD                        |
| B5171   |   | ASTA PER RAMPA DI SALITA                  | DRIVE ON RAMP PIN                        | BEFESTIGUNGSBOLZEN                           | TIGE CHARNIERES                            | PASADOR BISAGRA                           |
| B5180   | * | FINECORSA DI DISCESA PIZZATO FR 754       | DESCENT LIMIT SWITCH PIZZATO FR 754      | ABSTIEGENSCHALTER PIZZATO FR 754             | FIN DE COURSE DE DESCENTE PIZZATO FR 754   | FINAL DE CARRERA BAJADA PIZZATO FR 754    |
| B5186   |   | SFERA PIASTRE OSCILLANTI                  | BALL FOR OSCILLATING PLATES              | KUGEL FÜR SCHWINGENDE PLATTEN                | PLAQUE DE RETENUE DE CHEMIN DE ROULEMENT   | ESFERA PLACAS OSCILANTES                  |
| B5191   | * | BRONZINA Ø 40 X 44 X 40 MBI - CB85 - 4020 | BUSHING Ø 40 X 44 X 40 MBI - CB85 - 4020 | LAGERBUCHSE Ø 40 X 44 X 40 MBI - CB85 - 4020 | COUSSINET Ø 40 X 44 X 40 MBI - CB85 - 4020 | COJINETE Ø 40 X 44 X 40 MBI - CB85 - 4020 |
| B5196   |   | CAPPELLO COLONNA                          | POST CAP                                 | SÄULENABDECKUNG                              | BILLE PLATEAUX OSCILLANTS                  | CUBIERTA DE PLÁSTICO                      |
| B5197   |   | RULLO LATERALE                            | SIDE ROLL                                | ROLLE  | CAPOT COLONNE                              | RODILLO                                   |
| B5199   | * | FUNE "K"                                  | ROPE "K"                                 | SEIL "K"                                     | CÂBLE "K"                                  | CABLE "K"                                 |
| B5200   | * | FUNE "X"                                  | ROPE "X"                                 | SEIL "X"                                     | CÂBLE "X"                                  | CABLE "X"                                 |
| B5204   |   | CILINDRO COMPL.450LT-ATLT                 | COMPLETE CYLINDER                        | ZYLINDER KOMPLETT                            | VEREIN COMPLÈTE                            | CILINDRO COMPLETO                         |
| B5253   |   | PRESSACAPO PG 13.5                        | PG 13.5 CABLE HOLDER                     | KABELBUCHSE                                  | SERRE-CABLE                                | PASACABLE                                 |
| B5266   |   | AZIONATORE FINECORSA                      | LIMIT SWITCH ACTUATOR                    | ENDSCHALTERTIEB                              | CAME DE FIN DE COURSE                      | ACCIONADOR FINAL DE CARRERA               |
| B5276   |   | RULLO CENTRALE                            | CENTRAL ROLL                             | ROLLE  | ROULEMENT CENTRAL                          | RODILLO                                   |
| B5277XX |   | PIANALE TORRETTA L.C.                     | COMMAND SIDE TURRET PLATFORM             | AUFSATZPLATTFORM                             | PLATE-FORME TOURELLE                       | PLATAFORMA PLATAFORMA AUXILIAR            |
| B5278XX |   | PIANALE TORRETTA L.O.                     | OPPOSITE SIDE TURRET PLATFORM            | AUFSATZPLATTFORM                             | PLATE-FORME TOURELLE                       | PLATAFORMA PLATAFORMA AUXILIAR            |
| B5279XX |   | LEVA INTERNA                              | INSIDE LEVER L.T.                        | HEBEL  | LEVIER INTERNE                             | PALANCA                                   |
| B5280XX |   | LEVA ESTERNA                              | EXTERNAL LEVER L.T.                      | HEBEL  | LEVIER EXTERNE                             | PALANCA                                   |
| B5281XX |   | PROLUNGA                                  | TURRET PLATFORM EXTENSION                | FAHRSCHIENEN                                 | RALLONGE                                   | DISTANCIADOR                              |
| B5282   |   | PERNO UNIONE LEVE                         | L.T. LEVER UNION PIN                     | STIFT  | AXE BRAS                                   | PERNO                                     |
| B5284XX |   | CHIUSURA INCAVO ANTERIORE                 | ENCLOSE RECES                            | DECKEL                                       | COUVERCLE                                  | TAPA                                      |
| B5291   |   | RELÈ FINDER 24VAC 55.32.9.024.0040        | RELAY FINDER 24VAC 55.32.9.024.0040      | HUBRELAIS FINDER 24VAC 55.32.9.024.0040      | RELAIS FINDER 24VAC 55.32.9.024.0040       | RELÉ FINDER 24VAC 55.32.9.024.0040        |
| B5292   |   | RELÈ FINDER 24VAC 55.34.9.024.0040        | RELAY FINDER 24VAC 55.34.9.024.0040      | HUBRELAIS FINDER 24VAC 55.34.9.024.0040      | RELAIS FINDER 24VAC 55.34.9.024.0040       | RELÉ FINDER 24VAC 55.34.9.024.0040        |
| B5293   | * | FUSIBILE RITARDATO 5X20 4A T              | FUSE 5X20 4A T                           | SCHMELZSICHERUNG 5X20 4A T                   | FUSIBLE 5X20 4A T                          | FUSIBILE 5X20 4A T                        |
| B5294   | * | SCHEDA ELETTRICA M00GIOSCH20_02-04        | ELECTRIC BOARD M00GIOSCH20_02-04         | ELEKTRONIK-KARTE M00GIOSCH20_02-04           | PLATINE ÉLECTROMÉCANIQUE M00GIOSCH20_02-04 | PLATCA ELECTRONICA                        |
| B5300   |   | VITE TCTC 3,9X19 UNI 69543                | SCREW 3,9X19                             | SCHRAUBE TCTC 3,9X19 UNI 69543               | VIS TCTC 3,9X19 UNI 69543                  | TORNILLO TCTC 3,9X19 UNI 69543            |
| B5301   |   | RALLA A/S 30X47X1                         | FIFTH WHEEL                              | SCHWENKSATTEL                                | BERCEAU                                    | RALLA                                     |
| B5302   |   | RONDELLA ACC/NBR 3/8 17,3X23,9X2,1        | WASHER 17,3X23,9X2,1                     | SCHEIBE 3/8 17,3X23,9X2,1                    | RONDELLE 3/8 17,3X23,9X2,1                 | ARANDELA                                  |
| B5303   |   | VITE FORATA 3/8                           | HOLED SCREW*                             | SCHRAUBE 3/8                                 | BOUCHON RENIFLARD 3/8"                     | TORNILLO                                  |
| B5311   |   | TUBO SECONDARIO 450LT ATLT                | SECONDARY HOSE                           | SCHLAUCH                                     | FLEXIBLE SECONDAIRE                        | TUBO                                      |
| B5312XX |   | TRAVERSA L.C.450LT ATLT 3002              | CROSSPIECE COMMAND SIDE                  | TRAVERSE                                     | TRAVERSES CÔTÉ COMMANDES                   | TRAVESAÑO L.C.                            |
| B5313XX |   | TRAVERSA L.O.450LT ATLT 3002              | CROSSPIECE OPPOSITE SIDE                 | TRAVERSE                                     | TRAVERSES CÔTÉ OPPOSÉE AUX COMMANDES       | TRAVESAÑO L.O.                            |
| B5315XX |   | CARTER TRAVERSA 450LT ATLT                | CROSSPIECE CASING                        | GEHÄUSE                                      | CARTER TRAVERSES                           | CÁRTER                                    |
| B5318   | * | PERNO PULEGGE L92                         | PULLEY PIN L92                           | STIFT L=92                                   | AXE L=92                                   | PERNO L=92                                |
| B5319   | * | PERNO L=121                               | PIN L=121                                | STIFT L=121                                  | AXE L=121                                  | PERNO L=121                               |
| B5322   |   | PERNO X LEVA 450LT ATLT                   | LEVER PIN                                | STIFT  | AXE BRAS LT                                | PERNO                                     |
| B5324   |   | PERNO X CIL.TEL.L80 450LT ATLT            | CYLINDER PIN L80                         | STIFT  | AXE VERIN L80                              | PERNO                                     |
| B5326   |   | STANTUFFO PRIMARIO                        | PRIMARY PISTON                           | KOLBEN                                       | PISTON PRIMAIRE                            | ÉMBOLO                                    |

|         |   |                                      |                                      |                               |  |                                       |
|---------|---|--------------------------------------|--------------------------------------|-------------------------------|--|---------------------------------------|
| B5327   |   | STANTUFFO X CIL.SEC.450LT ATLT       | SECONDARY PISTON                     | KOLBEN                        | PISTON SECONDAIRE                      | ÉMOLO                                 |
| B5328   |   | TESTATA CILINDRO PRIMARIO            | PRIMARY CYLINDER HEAD                | ZYLINDERKOPF                  | TÊTE DE VÉRIN PRIMAIRE                 | CABEZAL CILINDRO                      |
| B5329   |   | TESTATA CILINDRO SECONDARIO          | SECONDARY CYLINDER HEAD              | ZYLINDERKOPF                  | TÊTE DE VÉRIN SECONDAIRE               | CABEZAL CILINDRO                      |
| B5332   |   | PERNO LEVA PORTA PULEGGIA D30X63     | PIN LEVER-PULLEY                     | STIFT                         | AXE LEVIER                             | PERNO PALANCA                         |
| B5335   |   | CILINDRO 450LT ATLT                  | CYLINDER                             | ZYLINDER KOMPLETT             | VEREIN COMPLÈTE                        | CILINDRO COMPLETO                     |
| B5336   |   | PISTONE 450LT ATLT                   | PISTON                               | KOLBEN                        | PISTON                                 | PISTÓN                                |
| B5337XX |   | PEDANA L.C.                          | COMMAND SIDE PLATFORM WITHOUT RECESS | AUFNAHMEPLATTFORM             | PLATE-FORME DE ROULEMENT CÔTE COMMANDE | PLATAFORMA                            |
| B5338XX |   | PEDANA L.O.                          | PLATFORM L.O.                        | FAHRSCHEIENE L.O.             | PLATE-FORME                            | PLATAFORMA                            |
| B5342   |   | STELO PER CIL.450LT ATLT             | CYLINDER ROD                         | ZYLINDER WELLE                | AXE VERIN                              | VÁSTAGO CILINDRO                      |
| B5343XX |   | COLON.2-4 450LT ATLT 3002            | POST 2-4                             | SÄULE 2-4                     | COLONNE 2-4                            | COLUMNNA 2-4                          |
| B5344XX |   | COLON.3 450LT ATLT 3002              | POST 3                               | SÄULE 3                       | COLONNE 3                              | COLUMNNA 3                            |
| B5345XX |   | COLON.1 450LT ATLT 3002              | POST 1                               | SÄULE 1                       | COLONNE 1                              | COLUMNNA 1                            |
| B5346   | * | KIT GUARNIZ.CIL.PRIMARIO 450LT       | PRIMARY CYLINDER GASKETS KIT         | SET DICHTUNG                  | JEU DE JOINTS POUR VERIN PRIMAIRE      | JUEGO DE JUNTAS                       |
| B5347   | * | KIT GUARNIZ.CIL.SECOND.450LT         | SECONDARY CYLINDER GASKETS KIT       | SET DICHTUNG                  | JEU DE JOINTS POUR VERIN SECONDAIRE    | JUEGO DE JUNTAS                       |
| B5348   |   | SUPPORTO CILINDRO 450LT ATLT         | CYLINDER SUPPORT                     | HALTER                        | SUPPORT VERIN                          | SOPORTE                               |
| B5351   |   | PULEGGIA D72 RINVIO FUNE+ BRONZINA   | PULLEY Ø72 + BUSHING                 | SCHEIBEN                      | POULIE                                 | POLEA + COJINETE                      |
| B5352   |   | ASTA DI SICUREZZA 450LT-ATLT         | SAFETY ROD                           | SCHERHEITS-ZAHNSTANGE         | POINTEAU DE SÉCURITÉ                   | BARRA DE SEGURIDAD                    |
| B5353   |   | PERNO LEVERISMO ZEPPA L.T            | LEVER LT WEDGE PIN                   | STIFT                         | AXE                                    | PERNO                                 |
| B5356   |   | ZEPPA LIFT TABLE 450LT-ATLT          | LIFT TABLE SECURITY WEDGE            | KEIL                          | TAQUET                                 | CUÑA                                  |
| B5378   |   | VALVOLA DI TRAVASO CILINDRO D170     | TRANSFER VALVE CYLINDER Ø70          | VENTIIL                       | CLAPET                                 | VÁLVULA                               |
| B5379   |   | PERNO SUP.CILINDRO ASTA SICUREZZA    | LT ROD-CYLINDER PIN                  | STIFT                         | AXE                                    | PERNO                                 |
| B5387XX |   | RAMPA SALITA 9005                    | RISE RAMP                            | AUFFAHRRAMPE                  | RAMPE DE MONTÉE                        | RAMPA DE ACCESO                       |
| B5391   | * | PATTINO LATERALE TRAVERSA            | LATERAL PAD                          | GLEITSCHU                     | PATIN DE LATÉRAL                       | PATÍN LATERAL                         |
| B5395   |   | KIT FISSAGGIO SERBATOI IN PVC        | TANK FASTENING KIT                   | TANK-BEFESTIGUNGSSSET         | ENSEMBLE FIXATIONS RESERVOIR           | JUEGO SUJECION DEPOSITO               |
| B5414   | * | MOLLA SUPERIORE RICHIAMO MARTELLETTI | WEDGE RETURN TOP SPRING              | FEDER                         | RESSORT                                | MUELLE                                |
| B5419   |   | TAPPO X PIOMBATURA VM15              | PLUG                                 | DECKEL                        | BOUCHON                                | TAPÓN                                 |
| B5422   |   | SERBAT.L12 PVC NERO CENTR.K3         | TANK                                 | BEÄHELTER                     | RÉSERVOIR                              | DEPÓSITO                              |
| B5425   | * | FILTRO ASPIRAZIONE 3/8"              | AIR FILTER                           | ANSAUGFILTER                  | FILTRE ASPIRATION                      | FILTRO DE ASPIRACION                  |
| B5429   |   | TAPPO DIN 908 1/4+RONDELL.RAME       | PLUG                                 | DECKEL                        | BOUCHON                                | TAPÓN                                 |
| B5436   |   | POMPA 18 10A5X348N 5CC/REV           | PUMP                                 | PUMPE                         | POMPE                                  | BOMBA                                 |
| B5441   | * | VALVOLA DI RITEGNO 3/8" KE           | CHECK VALVE                          | RUECKSCHLAGVENTIL             | CLAPET ANTI-RETOUR                     | VALVULA DE NO RETROCESO               |
| B5442   | * | VALVOLA DI MASSIMA15 80-250BAR       | MAX. PRESSURE VALVE15 80-250BAR      | UEBERDRUCKVENTIL15 80-250BAR  | CLAPET DE PRESSION MAX.15 80-250BAR    | VALVULA DE MAXIMA PRESION15 80-250BAR |
| B5447   |   | RONDELLA BONDED M12 GM504            | WASHER                               | UNTERLEGSCHIEBE               | ARANDELA                               | RONDELLE                              |
| B5448   |   | TUBO DI SCARICO 1/4 BSPT L=200       | DRAIN PIPE                           | ABLASSROHR                    | TUBE DE RETOUR                         | TUBO DE DESCARGA                      |
| B5455   |   | RULLO PER RAMPA D30/D16 L=50         | RAMP ROLLER                          | FFUEHRUNGSBUCHSE              | ROULEAU RAMPE BASCULANTE               | RODILLO RAMPA BASCULANTE              |
| B5456   |   | RULLO PER RAMPA D30/D16 L=25         | RAMP ROLLER                          | FFUEHRUNGSBUCHSE              | ROULEAU RAMPE BASCULANTE               | RODILLO RAMPA BASCULANTE              |
| B5459   | * | SENSORE TASTA FUNE DX                | RIGHT ROPE -FEELER SENSOR            | SEILABTASTSENSOR RECHTS       | PALPEUR DE CÂBLE DROIT                 | PALPEUR DE CÂBLE DROIT                |
| B5460   | * | SENSORE TASTA FUNE SX                | LEFT ROPE -FEELER SENSOR             | SEILABTASTSENSOR LINKS        | PALPEUR DE CÂBLE GAUCHE                | SENSOR CABLE IZDA.                    |
| B5488   |   | CORPO COLLARE DOPPIO 1/4             | DOUBLE COLLAR BODY 1/4               | KÖRPER                        | CORP                                   | CUERPO                                |
| B5489   |   | CORPO COLLARE SINGOLO D19            | SINGLE COLLAR BODY                   | KÖRPER EINZELNER BUNDRING Ø19 | CORP                                   | CUERPO                                |
| B5491   |   | GIUNTO POMPA K3                      | CONNECTING PUMP K3                   | GELENK PUMPE K3               | ACCOUPLLEMENT DE POMPE K3              | ACOPLAMIENTO BOMBA K3                 |

|         |   |  |   |  |  |                              |
|---------|---|--|---|--|--|------------------------------|
| B5496   |   | STELO CILINDRO PRIM.C/FR 450LT             | PISTON LT PRIMARY CYLINDER WITH BRAKE                         | ZYLINDER WELLE                                     | TIGE DE VÉRIN                                    | VÁSTAGO CILINDRO             |
| B5556   |   | TUBO SCARICO L=337 CENTR.LT/JC             | DRAIN PIPE  | ABLASSROHR   | TUBE DE RETOUR                                   | TUBO DE DESCARGA             |
| B5557   |   | COLONNETTA F-F 3/8" H=120                  | STUND BOLT F-F 3/8" H=120                                     | BUNDSCHRAUBE F-F 3/8" H=120                        | COLONNETTE F-F 3/8" H=120                        | TUBO DE ROSCA F-F 3/8" H=120 |
| B5558   |   | COLONNETTA FRANGIFLUSSO M12X1              | STUND BOLT M12X1  | BUNDSCHRAUBE M12X1                                 | COLONNETTE M12X1                                 | TUBO DE ROSCA M12X1          |
| B5654   | * | PULSANTE NERO + 1 CONTATTO N.O.            | BLACK PUSH-BUTTON + 1 N.O. CONTACT                            | DRUCKKNOPF   | BOUTON   | PULSADOR                     |
| B5655   | * | PULSANTE NERO + 2 ELEM. CONT. N.O.         | BLACK PUSH-BUTTON + 2 N.O. CONTACTS                           | DRUCKKNOPF   | BOUTON   | PULSADOR                     |
| B5659   | * | FUSIBILE RITARDATO 10X38 2A AM             | FUSE 10X38 2A AM  | SCHMELZSICHERUNG                                   | FUSIBLE  | FUSIBILE                     |
| B5665   |   | PASSAGUAINA GEWISS Ø20MM                   | SHEATH HOLDER GEWISS Ø20MM                                    | KABELMANTEL DURCHGANG GEWISS Ø20MM                 | FUSIBLE 10X38 2A AM                              | PASACABLE D20                |
| B5671   | * | INTERRUTTORE GENERALE                      | MAIN SWITCH   | SCHALTER   | INTERRUPTEUR                                     | INTERRUPTOR                  |
| B5672   | * | PULSANTE GRIGIO +2 CONT.N.O.+1 CONT.N.C.   | GREY PUSH-BUTTON + 2 N.O. CONTACTS + 1 N.C. CONTACT           | GRAU DRUCKKNOPF+ 2 KONTAKTS N.O. + 1 KONTAKT N.C.  | POUSSOIR GRIS + 2 CONTACTS N.O.+1 CONT.N.C.      | PULSADOR                     |
| B5673   | * | PULSANTE VERDE + 2 CONT. N.O.              | GREEN PUSH-BUTTON + 2 N.O. CONTACTS                           | GRÜNER DRUCKKNOPF+ 2 N.O. KONTAKTS                 | POUSSOIR GRIS + 2 CONTACTS N.O. + 1 CONTACT N.C. | PULSADOR VERDE               |
| B5674   | * | SELETTORE 3 POS +2 CONT.N.O.+2 CONT.N.C.   | SELECTOR SWITCH 3 POSITION + 2 N.O. CONTACTS + 2 N.C. CONTACT | UMSCHALTER AUFSATZPLATTFORM                        | POUSSOIR VERT + 2 CONTACTS N.O.                  | SELECTOR                     |
| B5676   |   | CENTRALINA K3                              | GEARCASE  | GERAET   | CENTRALE   | CENTRALITA                   |
| B5678   |   | COLLETTORE KE2000 M16/Z 80-250BAR          | MANIFOLD  | KOLLEKTOR  | COLLECTEUR                                       | COLECTOR                     |
| B5680   | * | EL.VALV. 3 VIE COMPL.CENTRAL.K3            | 3 WAY COMPLETE ELECTRO-VALVE                                  | ELEKTROVENTIL KOMPLETT                             | ELECTROVANNE COMPLÈTE                            | ELECTROVÁLVULA COMPLETA      |
| B5681   | * | VALVOLA V3D-DT-CEI                         | VALVE V3D-DT-CEI  | VENTIL   | SOUPAPE  | VÁLVULA                      |
| B5684   |   | VALVOLA STF38 9L/MIN                       | VALVE STF38 9L/MIN  | VENTIL   | SOUPAPE  | VÁLVULA                      |
| B5686   | * | BOBINA S4-CEI 24V 26W+CONNETTORE           | COIL S4-CEI 24V 26W+ CONNECTOR                                | SPULE  | BOBINE   | BOBINA                       |
| B5688   |   | GUAINA Ø20MM DIFLEX                        | SHEATH Ø20MM DIFLEX   | KABELMANTEL Ø20MM DIFLEX                           | PRESSE-ÉTOUPE GEWISS Ø20MM                       | MANGUERA                     |
| B5764   |   | CILINDRO PRIMARIO LT 450LT/06              | LT MAIN CYLINDER  | ZYLINDER KOMPLETT                                  | VÉRIN PRIMAIRE                                   | CILINDRO COMPLETO            |
| B5765   |   | CILINDRO SEC.LT COMP.450LT/06              | LT SECONDARY CYLINDER   | ZYLINDER   | VÉRIN SECONDAIRE                                 | CILINDRO                     |
| B5766   |   | CANNA CIL.PRIM.450LT/06                    | LT MAIN CYLINDER TUBE   | ZYLINDERROHR                                       | CYLINDRE DE VÉRIN                                | CAÑA CILINDRO                |
| B5767   |   | CANNA CIL.SECON.450LT/06                   | LT SECONDARY CYLINDER TUBE                                    | ZYLINDERROHR                                       | CYLINDRE DE VÉRIN                                | CAÑA CILINDRO                |
| B5768   |   | CILINDRO PNEUM.450LT/06                    | PNEUMATIC CYLINDER  | ZYLINDER   | VÉRIN  | CILINDRO                     |
| B5780   |   | QUADRO/T 400+SCHEDA                        | ELECTRIC BOX  | KASTEN DREHSTROM                                   | COFFRET ÉLECTRIQUE                               | CAJA ELÉCTRICA TRIFÁSICA     |
| B5788   | * | RONDELLA IN NYLON                          | NYLON WASHER  | SCHEIBE  | RONDELLE   | ARANDELA                     |
| B5832   |   | VALVOLA TRAVASO CIL.DI80FR 443             | TRANSFER VALVE LT PRIMARY CYLINDER WITH BRAKE                 | VENTIL   | CLAPET VÉRIN Ø70 AVEC FRAIN                      | VALVULA                      |
| B5848   |   | SUPPORTO MICROVALVOLA                      | MICROVALVE SUPPORT  | HALTER DRUCKLUFTMIKROVENTIL                        | SUPPORT MICRO VANNE PNEUMATIQUE                  | SOPORTE                      |
| B5849   |   | RACCORDO A "Y" 1/4M-Ø8 S6450               | QUICK "Y" CONNECTION M1/4"-Ø8 S6450                           | ANSCHLUSS "Y" 1/4M-Ø8 S6450                        | RACCORD "Y" 1/4M-Ø8 S6450                        | RACOR "Y" 1/4M-Ø8 S6450      |
| B5850   |   | CENTRAL.K3/T COMPL.2.2KW 4COLON.           | GEARCASE  | GERAET   | CENTRALE   | CENTRALITA                   |
| B5851   |   | CASSETTA                                   | ELECTRIC BOX  | KASTE  | CENTRALE COMPLETE K3                             | CAJA ELÉCTRICA               |
| B5852   | * | PULSANTE NERO +1 CONT. N.O.+1CONT. N.C.    | BLACK PUSH-BUTTON 1 N.O. CONT.+1N.C. CONT                     | SCHWARTZ DRUCKKNOPF+1 KONTAKT N.C.+ 1 KONTAKT N.O. | POUSSOIR NOIR + 1 CONTACT N.O. + 1CONTACT N.C.   | PULSADOR                     |
| B5853   | * | PULSANTE NERO + 1 CONT. N.C.+ 2 CONT. N.O. | BLACK PUSH-BUTTON + 1 N.C. CONTACT + 2 N.O. CONTACTS          | SCHWARTZ DRUCKKNOPF+1 KONTAKT N.C.+ 2 KONTAKT N.O. | POUSSOIR NOIR+ 1 CONTACT N.C. + 2 CONTACTS N.O.  | PULSADOR                     |
| B5863   |   | VITE FORATA 1/4 PER MANOMETRO              | HOLED SCREW ¼ FOR GAUGE                                       | DECKEL   | BOUCHON  | TAPÓN                        |
| B5885XX |   | KIT RAMPA SALITA                           | RISE RAMP KIT   | SET AUFFAHRRAMPE                                   | ENSEMBLE RAMPE                                   | KIT RAMPA DE ACCESO          |
| B5930XX |   | FERMARUOTA                                 | WHEEL STOP  | RADSPERRBLECH                                      | ARRET-ROUES                                      | TOPE DE RUEDA                |
| B5931   |   | VITE TE M12X100 UNI 5739                   | SCREW M12X100 UNI 5739  | SCHRAUBE M12X100 UNI 5739                          | VIS M12X100 UNI 5739                             | TORNILLO M12X100 UNI 5739    |

|         |   |  |                                       |  |  |  |
|---------|---|--|---------------------------------------|--|--|--|
| B5934   |   | TUBO FLESS.450LT-06                    | FLEXIBLE PIPE                         | AUSGUSS SCHLAUCH OEL                     | FLEXIBLE HAUTE                         | TUBO FLEXIBLE                              |
| B5935   |   | VITE TCCE M12X80 UNI 5931 ZN           | SCREW M12X80 UNI 5931 ZN              | SCHRAUBE M12X80 UNI5931                  | VIS M12X80 UNI5931                     | TORNILLO M12X80 UNI5931                    |
| B5943   |   | COPRIMORSETTIERA MOTORE                | MOTOR TERMINAL BOARD COVER            | KLEMMENBRETTABDECKUNG                    | COUVERCLE BORNIER                      | TAPA CAJA DE BORNES                        |
| B5945   |   | COPRIVENTOLA MOTORE                    | MOTOR AIR-CONVEYOR                    | LUEFTERABDECKUNG                         | PROTECTION DU VENTILATEUR              | PROTECCION VENTILADOR                      |
| B5950XX |   | PEDANA L.C.450LT ASSETTO               | PLATFORM                              | AUFNAHMEPLATTFORM                        | PLATE-FORME                            | PLATAFORMA                                 |
| B5951XX |   | PEDANA L.O.450LT ASSETTO               | PLATFORM                              | AUFNAHMEPLATTFORM                        | PLATE-FORME                            | PLATAFORMA                                 |
| B5952   |   | PIASTRA OSCIL.COMPL.450LT-ATLT         | OSCILLATING PLATE                     | SCHWINGENDE PLATTE                       | PLATEAU OSCILLANT                      | PLACA OSCILANTE                            |
| B5953   |   | PIASTRA SUP.ASSET.RUOTE 450ATL         | PLATE                                 | PLATTE                                   | PLAQUE                                 | PLACA                                      |
| B5954   |   | TELAIO INF.ASS.RUOTE450ATLT 07         | LOWER FRAME                           | GESTELL                                  | CHASSIS                                | BASTIDOR                                   |
| B5958   |   | SPIRALE 50X40 PER TUBAZIONI            | SPIRAL FOR HOSES                      | SPIRALSCHLAUCH                           | SPIRALE RILSAN                         | SPIRALE RILSAN                             |
| B5961   | * | PATTINO GIOGO                          | BEAM SLIDING PAD                      | GLEITSCHUH                               | PATIN                                  | PATÍN                                      |
| B5983   | * | ELETTROMAGNETE E0425 24V CC 50Hz       | ELECTROMAGNET E0425 24V CC 50H        | ELEKTROMAGNET E0425 24V CC 50H           | ELECTRO-AIMANT E0425 24V CC 50H        | ELECTROIMÁN E0425 24V CC 50H               |
| B6021   |   | KIT STAFFA SUPPORTO                    | SUPPORT BRACKER KIT                   | HALTERUNGSBÜGELSET                       | SUPPORT COMPLET AVEC VIS               | KIT ESTRIBO SOPORTE                        |
| B6091   |   | TAPPO SERBATOIO                        | TANK PLUG                             | TANKVERSCHLUß                            | BOUCHON DE RÉSERVOIR                   | TAPÓN DEPÓSITO                             |
| B6135XX |   | CARTER TRAVERSA L.C.                   | CASING                                | GEHÄUSE                                  | CARTER                                 | CÁRTER                                     |
| B6136XX |   | CARTER PROTEZIONE MAGNETI              | MAGNET PROTECTION CRANKCASE           | ABDECKUNG MAGNETSCHUTZ                   | PROTECTION MAGNETS                     | CARTER PROTECCIÓN ELECTROIMÁN              |
| B6155   |   | TUBO PRIMARIO                          | PRIMARY HOSE                          | SCHLAUCH                                 | FLEXIBLE PRIMAIRE                      | TUBO                                       |
| B6511   |   | PORTAFUSIBILE 10X38 WIMEX PCH1         | FUSE HOUSING 10X38 WIMEX PCH10X38     | SCHMELZSICHERUNGHALTER                   | PORTE-FUSIBLE 10X38 WIMEX PCH 10X38    | PORTAFUSIBLES 10X38 WIMEX PCH1             |
| B6513   |   | PASSACAVO GEWISS PG 9                  | CABLE CLAMP GEWISS PG9                | KABELDURCHGANG GEWISS PG 9               | PASSE-CÂBLE GEWISS PG9                 | PASACABLE GEWISS PG9                       |
| B6514   |   | PASSACAVO GEWISS PG11                  | CABLE CLAMP GEWISS PG11               | KABELDURCHGANG GEWISS PG11               | PRESSE-ÉTOUPE GEWISS PG11              | PASACABLE GEWISS PG11                      |
| B6515   | * | TRASFORMATORE230-400/24V 300VA 50/60HZ | TRANSFORMER 230-400/24V 300VA 50/60HZ | TRANSFORMATOR                            | TRANSFORMATEUR                         | TRANSFORMADOR                              |
| B6516   | * | INTERRUPTORE MAGNETICO 20A TYPE C      | MAGNET SWITCH 20A TYPE C              | MAGNETSCHALTER SIEMENS QS20A             | INTERRUPTEUR MAGNÉTIQUE SIEMENS QS20A  | INTERRUPTOR MAGNÉTICO SIEMENS QS20A        |
| B6521   |   | GUAINA Ø20MM DIFLEXCON CAVI            | SHEATH Ø20MM DIFLEX WITH CABLES       | KABELMANTEL Ø20MM DIFLEX MIT KABLE       | PRESSE-ÉTOUPE GEWISS Ø20MM AVEC CABLES | MANGUERA CON CABLES                        |
| B6522   |   | MORSETTO SPRECHER VU4-4                | TERMINAL SPRECHER VU4-4               | KLEMME SPRECHER VU4-4                    | BORNIER SPRECHER VU4-4                 | TERMINAL SPRECHER VU4-4                    |
| B6592   | * | MOTORE TRIFASE 230/400V 50HZ 2,2KW-K3  | MOTOR 3PHASE 230/400V 50HZ 2,2KW-K3   | ELEKTRO-MOTOR B14 230-400/50T 3KW 4CO.K3 | MOTOR B14 230-400/50T 3KW 4CO.K3       | MOTOR ELÉCTRICO B14 230-400/50T 3KW 4CO.K3 |
| C0042   |   | RACCORDO RAP.DIR.M 1/8X6               | QUICK MALE CONNECTION 1/8" X PIPE 6   | SCHNELLANSCHLUß 1/8 X SCHLAUCH 6         | RACCORD RAPIDE 1/8" X TUYAU 6          | CONEXION RAPIDA M 1/8X6                    |
| C0043   |   | VITE TE M6X10 UNI 5739                 | SCREW TE M6X10 UNI 5739               | SECHSKANTSCHRAUBE M6X10 UNI 5739         | VIS TH M6X10 UNI 5739                  | TORNILLO TE M6X10 ZINCADO                  |
| C0049   |   | TAPPO M1/4                             | PLUG M1/4                             | SCHRAUBE 1/4"                            | BOUCHON RENIFLARD 1/4"                 | TORNILLO CON ORIFICIO 1/4"                 |
| C0051   |   | TUBO RILSAN Ø4/6                       | RYLSAN HOSEØ4/6                       | SCHLAUCH 6X4                             | TUYAU RILSAN D.6X4                     | TUBO RILSAN Ø6X4                           |
| C0057   |   | RACCORDO RAPIDO "L" 1/8"-Ø6 S6500      | QUICK "L" CONNECTION 1/8"-Ø6 S6500    | KNIESTÜCK 1/8" X SCHLAUCH Ø6             | RACCORD "L" 1/8"                       | CONEXION "L"                               |
| C0061   |   | VITE TE M8X10 UNI 5739                 | SCREW TE M8X10 UNI 5739               | SECHSKANTSCHRAUBE M8X10 UNI 5739         | VIS TH M8X10 UNI 5739                  | TORNILLO M8X10 UNI 5739                    |
| C0062   |   | RONDELLA Ø10,5X21 UNI 6592             | WASHER Ø10,5X21 UNI 6592              | SCHEIBE Ø10,5X21                         | RONDELLE Ø10,5X21                      | ARANDELA PLANA Ø10 5X21                    |
| C0076   |   | RACCORDO A "L" M-F 1/4 S2020           | QUICK "L" CONNECTION M-F 1/4 S2020    | L-ANSCHLUSS "L" M-F 1/4"                 | RACCORD "L" M/F 1/4"                   | CONEXION "L" M-F 1/4"                      |
| C0099   |   | VITE TE 6X20 8.8 UNI 5739              | SCREW M6X20 - 8.8                     | SCHRAUBE M6X20 8.8                       | VIS TH M6 X 20 UNI 5739                | TORNILLO TE M6X20 UNI 5739                 |
| C0100   |   | RONDELLA Ø8,4X17 UNI 6592              | WASHER Ø8,4X17 UNI 6592               | SCHEIBE Ø8,4X17 UNI 6592                 | RONDELLE Ø8,4X17 UNI 6592              | ARANDELA Ø8 ZINCADA                        |
| C0105   |   | VITE TE M8X30 UNI 5739                 | SCREW TE M8X30 UNI 5739               | SECHSKANTSCHRAUBE M8X30 UNI 5739         | VIS TH M8X30 UNI 5739                  | TORNILLO TE M8X30 ZINCADO                  |
| C0278   |   | RACCORDO "L" GIREVOLE M M5X6           | "L" CONNECTION M5X Ø6                 | "L"-ANSCHLUSS                            | RACCORD                                | CONEXION "L"                               |
| C0339   |   | TUBO RILSAN 8X6 NERO                   | RILSAN HOSE 8X6                       | SCHLAUCH D.8X6                           | TUYAU RILSAN D.8X6                     | TUBO RILSAN Ø8X6                           |

|           |   |                                    |                                      |                                      |  |                            |
|-----------|---|------------------------------------|--------------------------------------|--------------------------------------|--|----------------------------|
| C0418     |   | VITE AUTOFILETT. Ø2,9X9,5 UNI 6954 | SELF TAPPING SCREW Ø2.9X9.5          | KTC SENKSCHRAUBE 2,9X9,5 UNI 6954 ZB | VIS KTC TC 2,9X9,5 UNI 6954 ZB         | TORNILLO                   |
| C0538     |   | TAPPO M1/8"                        | PLUG M1/8"                           | STÖPSEL M1/8"                        | BOUCHON M 1/8"                         | TAPÓN MACHO G 1/8"         |
| C0617     |   | RONDELLA Ø6,4X12,5 UNI 6592        | WASHER Ø6,4X12,5 UNI 6592            | SCHEIBE Ø6,4X12,5 UNI 6592           | RONDELLE Ø6,4X12,5 UNI 6592            | ARANDELA Ø6,4X12,5 UNI6592 |
| C0661     |   | VITE TE M8X10 UNI 5739             | HH SCREW M8X10 UNI 5739              | SCHRAUBE M5 UNI 5587                 | VIS M5 UNI 5587                        | TORNILLO M5 UNI 5587       |
| R0046     |   | DADO MEDIO M12 UNI 5588            | NUT M12                              | MUTTER M12 UNI 5588                  | ECROU M12 UNI 5588                     | TUERCA M12 UNI 5588        |
| R0068     |   | SEEGER E30 UNI 7435                | SNAP RING E30 UNI 7435               | SEEGER E30 UNI 7435                  | ANNEAU DE FIXAGE E30 UNI 7435          | SEEGER E30 UNI 7435        |
| R0153     |   | VITE TE M8X25 UNI 5739             | HH SCREW M8X25 UNI 5739              | SECHSKANTSCHRAUBE M8X25 UNI 5739     | VIS TH M8X25 UNI 5739                  | TORNILLO TE M6X25 UNI5739  |
| R0158     |   | DADO M8 UNI 5588                   | NUT M8 UNI 5588                      | MUTTER M8 UNI 5588                   | ECROU M8 UNI 5588                      | TUERCA M8 UNI 5588         |
| R1006     |   | DADOBLK M20X1.5 UNI 7474 ZB        | SELF-LOCKING NUT M20X1.5 UNI 7474 ZB | MUTTER M20X1.5 UNI 7474              | ÉCROU AUTOBLOQUANT M20X1.5 UNI 7474 ZB | TUERCA M20X1.5 UNI 7474    |
| R2497     |   | ANELLO SEEGER E16 UNI 7435         | RETAINING RING E16 UNI 7435          | SEEGER-RING E16 UNI 7435             | CIRCLIPS E16 UNI 7435                  | SEEGER E16 UNI 7435        |
| V926      | * | TAMPONE GOMMA H=80 120X160         | RUBBER PADS                          | GUMMISTOPFEN                         | TAMPON EN CAOUTCHOUC                   | TAMPÓN EN GOMA             |
| Z_RICAMBI |   | * = RICAMBI CONSIGLIATI            | * = RECOMMENDED SPARE PARTS          | * = EMPFOHLENE E-TEILE               | * = PIECES DE RECHANGE CONSEILLEES     | * = REPUESTOS ACONSEJAIOS  |